

IEC Appliance Inlet C14 or C18, sandwich Mounting, PCB- or Solder Terminal



Snap-in mounting



Screw-on mounting

C14



70 °C

**Description**

- Panel Mount:
Snap-in or screw-on mounting on PCB, sandwich or rear-side
- Appliance Inlet, Pin temperature 70 °C, protection class I or II
- For PCB mounting

Approvals

- VDE License Number: 40012767
- UL License Number: E96454
- CSA License Number: 38456

Other versions on request

- With solder terminals

References

[General Product Information](#)

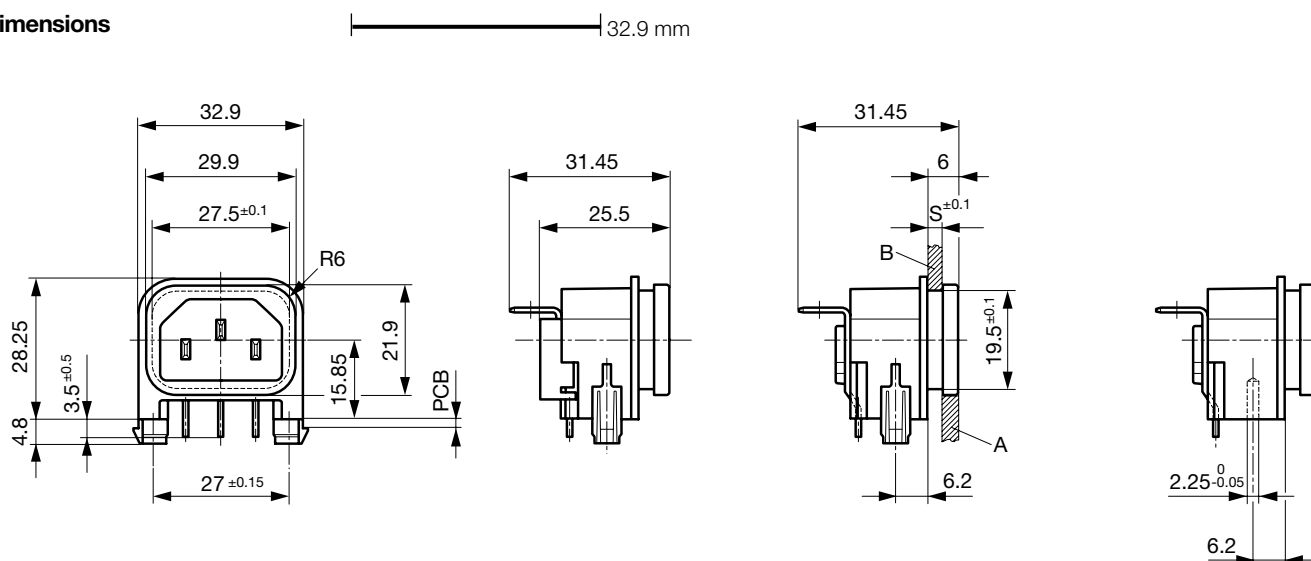
Weblinks

[Approvals](#), [RoHS](#), [CHINA-RoHS](#), [Mating Connectors](#), [e-Store](#), [Distributor-Stock-Check](#), [Accessories](#)

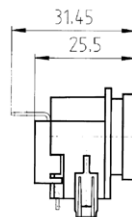
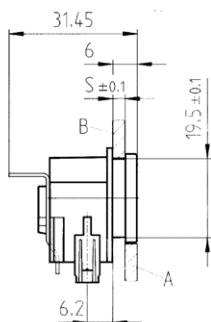
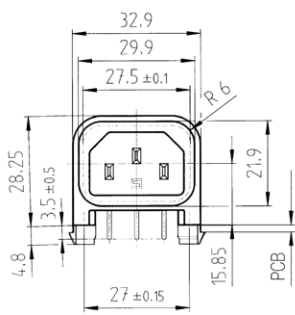
Technical Data

Ratings IEC	10A / 250VAC; 50 Hz
Ratings UL/CSA	15A / 250VAC; 60 Hz
Dielectric Strength	> 3 kVAC between L-N > 3 kVAC between L/N-PE (1 min/50 Hz)
Allowable Operation Temp.	-25 °C to 70 °C
Degree of Protection	from front side IP 40 acc. to IEC 60529
Protection Class	Suitable for appliances with protection class 1 or 2 acc. to IEC 61140
Terminal	For PCB mounting ; Ground terminal: angled to pin axis Solder terminal on request
Panel Thickness s	Sandwich/rear-side: 1.5/2/2.5/3 mm
Material: Housing	Thermoplastic, black, UL 94V-0

Appliance Inlet	C14 acc. to IEC/EN 60320-1, UL 498, CSA C22.2 no. 42 (for cold conditions) pin-temperature 70 °C, 10A, Protection Class 1 or 2
-----------------	--

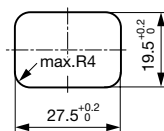
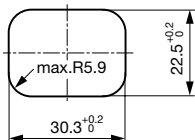
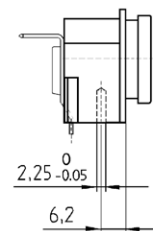
Dimensions

Snap-in mounting



with insulation cover

Screw on PCB mounting

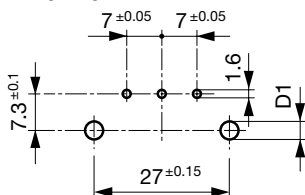


Rear panel mounting

Sandwich mounting

Drilling diagrams

Drilling diagram



d1 = 6 ± 0.05 for Snap-in mounting
 d1 = 3.6 ± 0.05 for screw-on mounting
 with self-tapping screws
 3 mm (EJOT-PT), 2 screws enclosed

Variants

Protection Class	Panel mounting	Panel Thickness s [mm]	Ground terminal 4.8 x 0.8 mm	Cover	Order Number
1	Screw	1	angled to pin axis		GSP2.9103.11
1	Screw	1.5	angled to pin axis		GSP2.9103.13
1	Screw	2	angled to pin axis		GSP2.9103.14
1	Screw	2.5	angled to pin axis		GSP2.9103.15
1	Screw	3	angled to pin axis		GSP2.9103.16
1	Screw	1.5	angled to pin axis	●	GSP2.9113.13
1	Screw	2	angled to pin axis	●	GSP2.9113.14
1	Screw	2.5	angled to pin axis	●	GSP2.9113.15
1	Screw	3	angled to pin axis	●	GSP2.9113.16
1	Snap-in	1	angled to pin axis		GSP2.9203.11
1	Snap-in	1.2	angled to pin axis		GSP2.9203.12
1	Snap-in	1.5	angled to pin axis		GSP2.9203.13
1	Snap-in	2	angled to pin axis		GSP2.9203.14
1	Snap-in	2.5	angled to pin axis		GSP2.9203.15
1	Snap-in	2.5	angled to pin axis		GSP2.9213.15

Protection Class	Panel mounting	Panel Thickness s [mm]	Ground terminal 4.8 x 0.8 mm	Cover	Order Number
1	Snap-in	3	angled to pin axis		GSP2.9203.16
1	Snap-in	1.5	angled to pin axis	●	GSP2.9213.13
1	Snap-in	2	angled to pin axis	●	GSP2.9213.14
1	Snap-in	3	angled to pin axis	●	GSP2.9213.16
2	Screw	1.5	straight		GSP2.9100.13
2	Screw	3	straight		GSP2.9100.16
2	Screw	2	straight	●	GSP2.9110.14
2	Screw	2.5	straight	●	GSP2.9110.15
2	Snap-in	1.5	straight		GSP2.9200.13
2	Snap-in	2.5	straight		GSP2.9200.15
2	Snap-in	1.5	straight	●	GSP2.9210.13
2	Snap-in	2	straight	●	GSP2.9210.14
2	Snap-in	2.5	straight	●	GSP2.9210.15
2	Snap-in	3	straight	●	GSP2.9210.16

Additional version on request, e.g.: Ground terminal straight or quick-connect terminal 6,3 x 0,8 mm

Packaging unit 50 Pcs

Mating Outlets/Connectors

Category / Description

Connector Overview complete



IEC Connector C15, Rewireable, Straight	0101
IEC Connector C15A, Rewireable, Straight	0102
IEC Connector C15A, Rewireable, Straight	0102-G
IEC Connector C15A, Rewireable, Angled	0112
IEC Connector C13, Rewireable, Angled	4012

[Connector further types to GSP2](#)

...

Power Cord Overview complete



Power Cord with IEC Connector C13, Angled	0311
Power Cord with IEC Connector C13, Angled	3011
Power Cord with IEC Connector C13, Angled	3012
Power Cord with IEC Connector C13, Angled	3013
Power Cord with IEC Connector C13	3020

[Power Cord further types to GSP2](#)

...

Power Supply or Interconnection Cord Overview complete



Divers Power Supply and Interconnection Cords 10 A	6000.0214
Divers Power Supply and Interconnection Cords 10 A	6000.0224
Divers Power Supply and Interconnection Cords 10 A	6003.0204
Divers Power Supply and Interconnection Cords 10 A	6003.0205
Divers Power Supply and Interconnection Cords 10 A	6003.0215

[Power Supply or Interconnection Cord further types to GSP2](#)

...